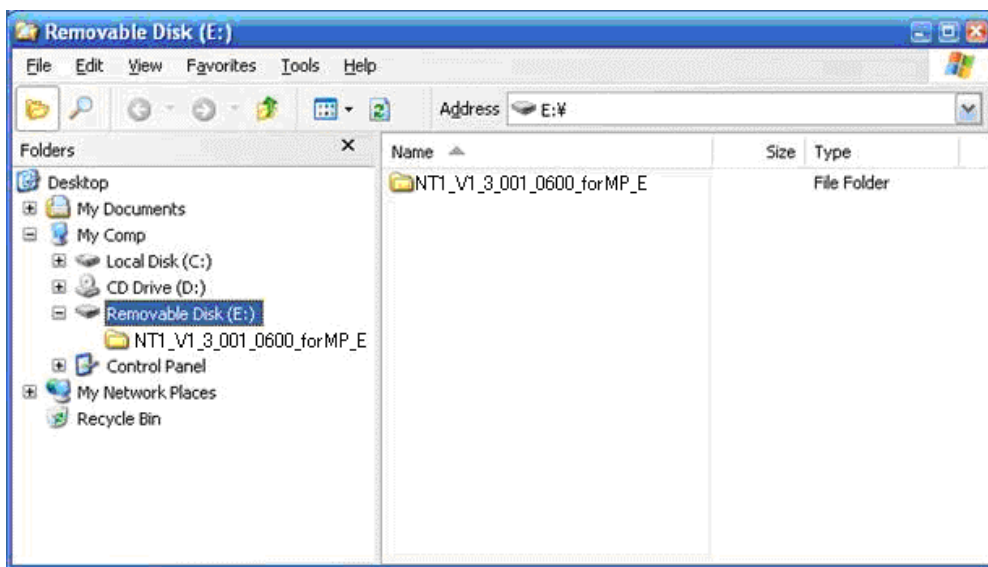


1 How to Update Navigation

1.1. Download update data

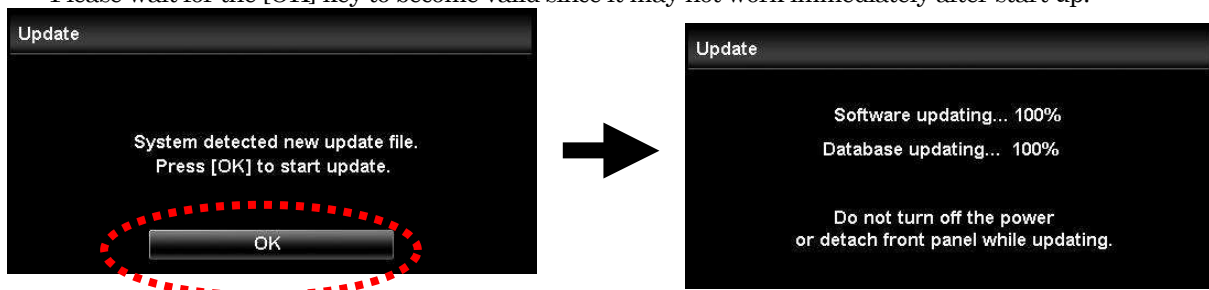
1. Download the latest update file in ZIP format.
2. Double-click and unzip the downloaded file.
3. Prepare a blank SD card (FAT16/FAT32 format).
4. Copy all unzipped folders into the SD card's root directory as shown below.



5. Insert the SD card into the SD slot on the back side of the front panel, and attach it to the main unit.

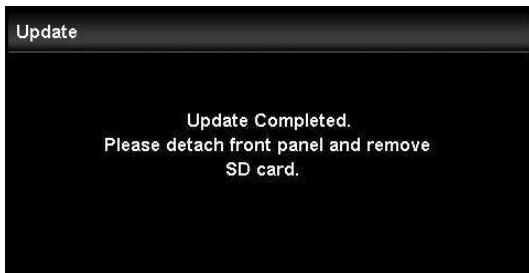
1.2. Update the unit

1. When the system starts up, the following screen will appear. Press [OK] to start update.
* Please wait for the [OK] key to become valid since it may not work immediately after start up.



NOTE : Do not detach the front panel or turn off the power during update.

2. When update is complete, the screen will show the following. Detach the front panel and remove the SD card.



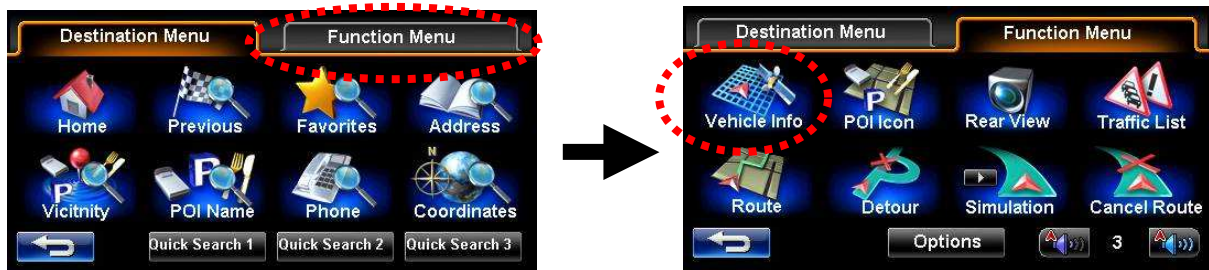
If an error message appears on the screen, there may be a problem with the SD card or the SD card adapter. Please try again by formatting the SD card or changing the SD card adapter.

2 How to Check the Unit's Version

1. Press [MENU] key from MAP display.



2. Select [Function Menu] tab, and press [Vehicle Info] key.



3. Select [System] tab on Vehicle Information screen.
You can check the unit's version in the green-marked area shown below.

